



2015



2015



2018

COMPANY PROFILE PT DHARMA KARYATAMA MULIA

Jl. Raya Bogor Km. 28 No. 29 Pekayon, Ps. Rebo,
Jakarta Timur, DKI Jakarta, 13710

+6221 8718864-65

+6221 8727018

www.dkm.co.id
admin@dkm.co.id



“Go get with us!

We are highly committed to deliver an excellent service to meet every client’s needs.

As so, we keep pace in building and maintaining a long-term relationship with every partner, and in delivering a satisfying benefits for every client.”



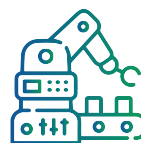
MANAGEMENT FACILITY SUPPORT SERVICES

- Security Services
- Housekeeping Services
- Transportation Services
- Human Capital Support Services



BUILDING FACILITY SERVICE

- Civil Engineering
- Mechanical Engineering
- Electrical Engineering
- Facility Maintenance Care & Services



SEMI-MANUFACTURE ASSEMBLING

- Trading Parts & Tools
- Assembling
- Machining



HOUSEKEEPING

General Cleaning

We are managing and maintaining the hygiene and sanitation of the sites and buildings as follows:

1. Residents
2. Commercials
3. Offices
4. Hospitals and Clinics
5. Manufactures
6. Storage or Warehouse
7. Religious Sites
8. Cultural Sites
9. Gardens and Parks
10. Parking Lot

Pest and Rodent Control

We are managing and maintaining the hygiene and sanitation from any bacteria and viruses by these following methods:

1. Pest Control
2. Rodent Control
3. Termite Control and Baiting
4. Fumigation
5. Virus and Bacteria Disinfection
6. Inspection and Consultation

Floor Specialist Cleaning

1. Basic Floor Cleaning

- Carpet
- Parquet
- Ceramics
- Wood
- Vinyl
- Stones

2. Floor Crystallization Cleaning

- Marbles
- Granite

3. Floor Restoration

- Washing
- Staining
- Sanding
- Waxing
- Varnishing
- Repairing
- Gap Filling
- Removal and Restitch

Height Access Cleaning & Maintenance

Gondola and Rope Access

- High Rise Wall and Window Cleaning
- High Pressure Cleaning
- Exterior Façade Cleaning
- Roof and Gutter Cleaning

Landscape & Garden Maintenance

1. Landscape Design and Plotting
2. Garden, Pool, and Gazebo installations and cleaning

Housekeeping Training





SECURITY

About Security

The fundamental of our security services is in the method of protection standard in which we adopt the system pattern used by POLRI Perkap No. 24. Thn 2007, prioritizing preventive actions towards threats and any other disadvantages, by applying professional management. Our excellence is supported by a well-equipped Diklat Security (Gada Pratama) and K3 Training, First AIDS, and Fire Rescue. our commitment is to provide an ultimate service to our clients.

Security Certification & Trainings

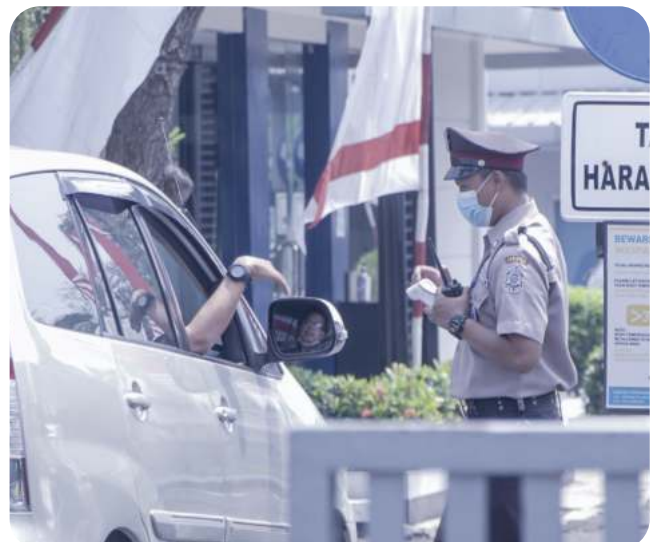
1. Gada Pratama
2. Gada Madya
3. Gada Utama
4. Greeting and Grooming
5. Service Excellence
6. Bomb Threats Theory
7. Damkar Theory
8. Marching Rules and Handcuff Drilling

Security Monitoring & Reporting

1. Regular Training 4-6 times within a year
2. Regular monthly visitation
3. Regular monthly briefing
4. Online daily reporting
5. Monthly written reporting
6. Annual written reporting

Legality

- ✓ Asosiasi Badan Usaha Jasa Pengamanan Indonesia (ABUJAPI)
- ✓ Nomor: 00179/BPDABUJAPI JAYA/24/11/2009
- ✓ Certificate ISO No. OSC 00990
- ✓ SNI ISO 9001:2008 PT. DHARMA KARYATAMA MULIA Unit Security, Housekeeping, dan Car Rental
- ✓ Izin Usaha Badan Usaha Jasa Pelatihan Keamanan
- ✓ Nomor: S1/3612/IV/2016
- ✓ Izin Operasional, sebagai Badan Usaha Jasa Pengamanan di Bidang Usaha Jasa Penyedia Tenaga Pengaman





About Transportation

For over 10 years, Car Rental division has been contributing in providing car rental services. This division has been maintained with excellent management system and been operated by professional and experienced drivers.

Transportation Trainings

1. Basic Corporate Philosophy
2. Driving Safety
3. Service Excellence

Drivers Excellence

- ✓ Selective recruitment methods
- ✓ Frequent Trainings
- ✓ Supervision by Coordinator



Drivers Excellence

- ✓ Competitive Price
- ✓ Safety Warrants
- ✓ Taxi Service
- ✓ 24 Hours Call Center
- ✓ Fit and Proper Facility
- ✓ Professional Driver and Management

Transportation Reporting

1. Body performance checked-list and Car Kilometer measuring.
2. Body performance check-list, distance measuring, and trip fare recording.

Business Feature

TRANSPORTATION



Business Feature

TRANSPORTATION



Driver
Training



About Human Capital Support

Human Capital Supply division has been experiencing in major corporate management field for more than 10 years. Today, DKM has supported of approximately 3000 employees, spread all across the entire Panasonic Group and Non-Group Partnership.

Manpower Support

1. Events

- ✓ SPG/SPM
- ✓ Usher
- ✓ Liaison Officer
- ✓ Female Presenter
- ✓ Stand Guides

2. Banks

- ✓ Teller/Cashier
- ✓ Customer Service
- ✓ Admin
- ✓ Driver
- ✓ Security

3. Office Affairs

- ✓ Receptionist
- ✓ Telephone Operator
- ✓ Secretary
- ✓ Administration Officer
- ✓ and etc

4. Manufacture and Factory

- ✓ Helper
- ✓ Machine Operator
- ✓ and Welding Operator.

Business Feature

HUMAN CAPITAL SUPPORT





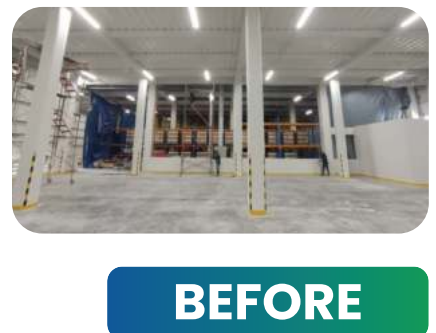
Building Facility Service

1. Civil Engineering
2. Mechanical Engineering
3. Electrical Engineering
4. Facility Maintenance Care & Services



Business Feature

BUILDING FACILITY



BEFORE

Business Feature

BUILDING FACILITY



AFTER



TRADING TOOLS & PARTS

About Trading Tools & Parts

Trading Tools and Parts Division has a strong bond with the industrial world, while it is not the main tool and element in a production system, but it has its own specialty in a production system.

By having an experience in many industrial scopes, trading tools and parts to finally fulfill the demands, in which:

Tools & Parts

- 1. Material Parts**
 - Injection Parts
 - Metal
 - Rubber
- 2. Tools**
 - General Engineering Production



Business Feature

TRADING TOOLS & PARTS





About Assembling & Machining

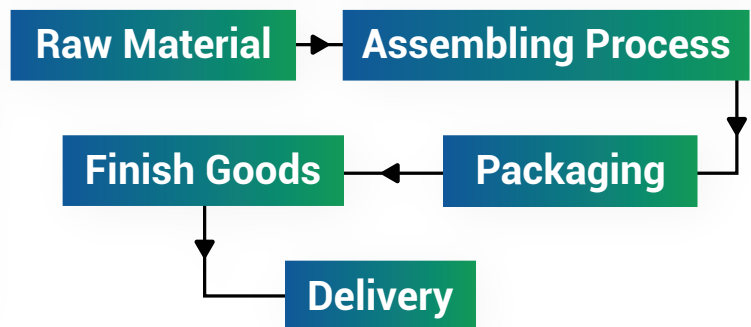
Assembling a component assembly services to a product that consists of a number of parts which are then to be incorporated into the finished goods.

Assembling DKM advantages:

1. Competitive price
2. Quality guaranteed
3. Work according schedule

Information:

1. Total Land 1300 m²
2. Warehouses: 600 m²
3. Offices: 200 m²
4. Crew: 40 up to 70 staff



Business Feature

ASSEMBLING & MACHINING



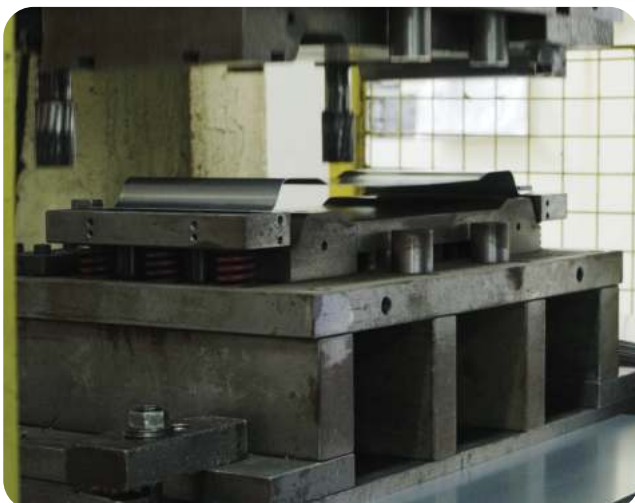


About Machining

Machining was founded in June 2008 with HR professionals so as to produce a quality product. To create and maintain all quality products, should be supported by equipment and precision calibrated periodically in accordance with the standards specified.

Machining Excellence Include:

1. **Speed** : Acceleration (Acceleration)
2. **Snipe** : The precision work and Delivery
3. **Strength** : Always pay attention to human resources to support the company's commitment to all customers.



Business Feature

MACHINING



Stamping Process
(With Press Machine)

Our Principal Partners

www.dkm.co.id

Panasonic



Our Client

Panasonic



SUNSTAR



Energizer



ASTON BOGOR
HOTEL & RESORT



MERATUS

Haier

Go TRANS
SUPPLY CHAIN LOGISTICS SOLUTION



PHC



YKK

Châteraisé
Patisserie from Japan

TOKYO FOOD